

Two Piece Wiper Dies

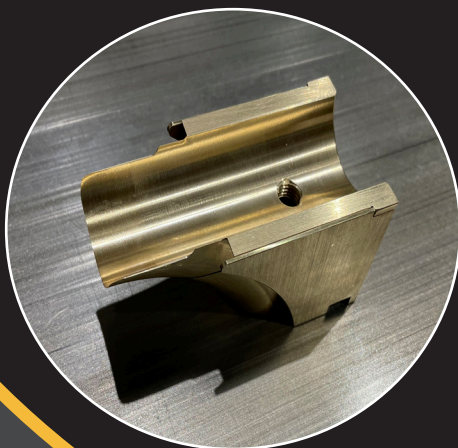
Complete Tooling
Solutions

UNISON
INTELLIGENT TUBE TECHNOLOGY



Two-Piece Wiper Dies are great for more difficult applications when additional support is required, such as 1D bending.

Offering the same support and rigidity of a traditional Square Back Wiper Die, but with the added benefits of Wiper Inserts. Our Two-Piece Wiper Dies are easy to set-up, eradicate down-time and the expense of recutting. They are the perfect cost-effective solution.



- From 15mm (0.59") – 152.4mm (6") OD Tube/Pipes
- Take advantage of our Stocked Wiper Inserts.
- Can be tied into a Consumable Tooling Agreement for guaranteed stock to call off.

Contact Luke Gibson
for more details

Unison Ltd,
Faroe House,
Thornburgh Road,
Scarborough.

01723 582868
sales@unisonltd.com

Unison Consumable Tooling Agreements

*- the tooling you need,
precisely when you need it*

Unison Consumable Tooling Agreements allow our customers to take advantage of shorter lead times, reduced on-site stockholding levels and significant cost savings. Whatever your consumable bend tooling requirements or frequency, we'll create a tooling

agreement that meets your needs perfectly – holding the wiper dies, mandrel balls and other stock you require at one of our UK, USA or partner facilities for scheduled and swift, on-demand delivery.

Benefits of choosing Unison Consumable Tooling

- *Scheduled and on-demand consumable tooling delivery*
- *Much faster delivery times than made-to-order tools*
- *Eliminate the risk of a tooling shortage stopping production*
- *Standardise the tooling used across all your facilities*
- *Reduce the stockholding and value of tooling you keep on site*
- *Save money – volume discounts and convenient, regular payments*

To discuss your consumable tooling requirements

Contact: Luke Gibson
Tel: +44 (0) 1723 582868
Email: lukeg@unisonltd.com
www.unisonltd.com

